

Exwick Courier

A Free Newsletter
for and by people in
Exwick

The newsletter of the Exwick Community Association

Why a community newsletter?

Richard Cragg

The New Community Centre for Exwick certainly has been a long time coming. In the mid 1990's, people began seriously lobbying for a community facility in their Ward; a focal point for the community to meet together, dream together and achieve together.

*"Excuse me.
What Community
Centre?"*

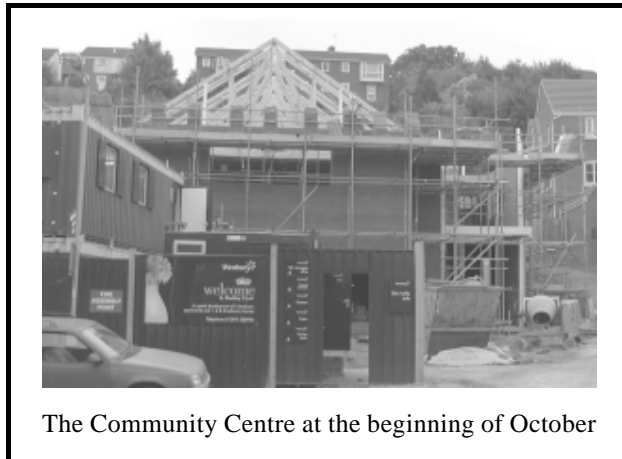
Now bricks are being laid and the site even boasts its own crane. The current completion date is March 2006, and with a fair wind, it will open its doors to the people of Exwick a month later.

'Excuse me. What Community Centre?'

If you live in Winchester Avenue or Guildford Close, anywhere but Kinnerton Way or Farm Hill, the Community Centre is probably either one of those vague rumours you have been hearing for years, or you haven't heard anything about it at all.

Let's be frank, the top of Kinnerton Way is hardly the middle of Exwick and that's where the Centre will be next to the former GP Stores site.

And it's up a hill But it will have a general store attached to it which will make



The Community Centre at the beginning of October

getting there more attractive doesn't it? It is on the E & F bus routes.

So it will be very convenient for some people and not for others. It is being built by Westbury Homes as part of their agreement with Exeter City Council to build homes in the Farm Hill area. Up until now a group of local residents have been working hard to make it succeed.

The Exwick Community Association will take on the lease of the building from the City Council. This once active Association is in the process of being revitalised and new Trustees are being sought now to make sure the

Charitable Association renews its commitment to the whole of Exwick – as it had

done in the past. There is no doubt that the new Community Centre will be the focus of many activities managed by the Community Association, but there should be many things going on that will be in other parts of Exwick.

So why this newsletter?

Exwick residents are at the beginning of what should be an exciting time for them. The Community Association wants to give everyone in the Ward the chance to be fully involved in the build up to the opening of the Centre and the future success of the Association. But as the main focus for this activity is not

October 2005

- *Everyone is invited to an open meeting of the Exwick Community Association 1st November 7.30pm at the Civil Service Club Exwick.*
- *Become a member of the ECA for FREE!*
- *Help in an exciting project to help local people and run the new community association and the new community centre.*
- *See back page for more details*

in the physical centre of the community, it could be sidelined in most people's thoughts. This newsletter, therefore, will attempt to keep everyone in Exwick in touch.

It aims to be a forum for people's views on local issues, an information source for local activities, transport, pre-school activities and a host of other things you should know about, an update on the Centre's progress and how you can become involved in the whole Exwick experience [or the bits that particularly interest you].

We do hope you read it and get in touch if you want to become involved. There is plenty of work to do, wherever you live in Exwick.



Community Networking Event

28th October 10am - 3pm

The Café, Centre Exe, Exwick Rd, Exwick

If you are a community group, charity or social entrepreneur please come to this event. We have many Funding Bodies attending The Big Lottery Fund, Awards for All, The Tudor Trust, The Scarman Trust, UnLtd, and Exeter City Council. Also attending in an advisory capacity Community Enterprise Unit, Exeter Council for Voluntary Services. Also workshops for filling out funding application forms and much more...Contact Tor Hodgson, The Old School House, Centre Exe, Exwick Rd. tor@eci.org.uk 01392 662664

Contact us.
Exwick Community
Association.
c/o The Old School
House, Centre Exe,
Exwick Rd, Exwick,
Exeter.

tor@eci.org.uk
01392 662664

Other activities in Exwick - Tell us so we can tell Exwick

The Exwick Community Association is for everyone who lives in Exwick.

The aim of "The Exwick Courier" is to help develop the community in Exwick and will be distributed to every home in Exwick 3 or 4 times a year.

We want to let people know about the many things which happen in Exwick and highlight the facilities we already have here. In addition we hope to en-

courage people to start new activities and open new facilities.

For this first newsletter we have included details of a few activities, but there are far more things going on here. So in future issues we want to include details of others.

Therefore we need you, the people of Exwick, to let us know what is going on. If you run a preschool or Scout group, a

lunch club or health project or any other community group or facility let us know and we will tell Exwick.

Teenage Youth Club

The New Devon Youth Service bus will be parked at the car park on Station Road next to the flood relief every Tuesday and Thursday night 7-9pm.

Open to all teenagers in Exwick

Exwick Ark Pre-school expands to fill the gap.

The Exwick Ark Pre-school, opened at Easter 2005. Based at the Juniors site of Exwick Heights Primary School, it quickly filled its morning sessions and is to extend its hours to afternoon sessions and lunch clubs. From January 2006 this new and vibrant pre-school will be open Mondays to Fridays from 9.15am-3.30pm, during term times for children 2-5.

Harri Sharp and Paula Stone have already started the process of achieving Quality Assured status recognising the high standards they have set for the pre-school. The pre-school has underlying Christian values which mean that everyone is encouraged to care for each other, say sorry when they get things wrong and to enjoy life to the full.

The pre-school is registered with Ofsted and they are able to access Early Years Education Funding (EYEF) for children from the term after their third birthday until they start school. This funding is available for every child regardless of family income. Currently EYEF is available for 55 sessions a term.

If you need additional childcare the Kids club at the Infants site of Exwick Heights Primary School (formerly Foxhayes First School) is able to provide childcare before and after school and during the school holidays. Children will be safely escorted between the sites by staff.



The Exwick Ark

A caring, high quality pre-school for 2-5 year olds.
Tel 07931 591735

www.exwickarkpreschool.com
Admin@exwickarkpreschool.com
Exwick Heights Primary School
Exwick Hill, Exwick EX4 2BG

Come to an Open day

Come along to our next open day on Thursday 27th October 10am – 12noon. Just turn up no need to book. Bring your child and come to play and see our facilities.

For more detail check out our colourful website

www.exwickarkpreschool.com

Exwick Community Church

Exwick Community Church started 12 years ago and since then many people in Exwick have found a warm welcome with us. We now meet in Exwick Heights Primary School, Jun-

ior Section (formally Exwick Middle School) every Sunday morning at 10:30 a.m. There are special activities for children, and a crèche for the little ones. The first Sunday of every month is a special service for visitors, but everyone is welcome every

week. So come and join us, and stay for a cup of coffee afterwards. We look forward to meeting you!

During term time we also have weekday evening youth clubs at Exwick Heights School (Exwick Middle School). On Wednesdays we run "JTT" for children aged 5-9, 6-7.30 pm. Then on Friday nights is "PGI Friday" 7:00-9.15pm. Two weeks per month we have youth band practice 7-8pm, the other weeks are other activities. This hour is followed by groups for 10s+ & 14s+.

This Christmas we are going to run the third bi-annual Exwick Christmas Puppet Show which have been very popular over the years. Although free to enter we will be collecting to

**Exwick
Community
Church**

help support a dispensary in West Africa and a soup kitchen in Exeter.

For church info contact:

John Adams 671022

Exwick Community Church Christmas Services

at Exwick Heights School,
(formerly Exwick Middle School)
Nativity Service - 18th Dec
10:30 a.m.

Carol Service - 18th Dec
6:00 p.m.

Christmas Day - 10.30am

JTT Children's Club

Exwick Community Church

For children aged 5-9

Wednesdays 6:00-7:30 p.m.

For more details contact

Trev and Harri on 848740

ior Section (formally Exwick Middle School) every Sunday morning at 10:30 a.m. There are special activities for children, and a crèche for the little ones. The first Sunday of every month is a special service for visitors, but everyone is welcome every

The Exwick Community Association 2005

Based on its past good record, the Development Group for the Exwick Community Centre asked the two present Trustees [Pat Cusa and Linda Cash] of the Exwick Community Association if they would have any objections to reviving the Association. Its time had come again to be the people of Exwick's organisation for the development of their community and, as part of that role, take on the management of the new Community Centre. Pat and Linda were pleased to give their consent, but made it clear they should not stay on as Trustees as they thought new people and ideas were now needed. It was sad to see them leave the Association, but in essence they were right; new blood, new ideas and new ways forward are required now, more than ever before.

In writing a new Business Plan for the Community Association, the Development Group thought the Mission Statement [below] summed up what the Association was there for:

Exwick Community Association, through collective action, partnership and inclusiveness, will endeavour to nurture a sense of belonging in local people that will make Exwick a great place to live. The Exwick Community Centre will be the main focus for this development, but its effect will be felt

across the whole community.

Understanding that the Community Association will be there to involve all residents across Exwick, five local people have already put themselves forward as new Trustees. This means they will be registered with the Charity Commission within the next four weeks and the Association can begin to operate again.

Although five Trustees are enough to legally run the Association, there is provision in the Constitution for twelve Trustees. Having the full complement means that the Association can have a greater diverse range of views, wider representation across the Ward and a much more powerful voice in its dealings with the City Council, the County Council, the Primary Care Trust and other Public Agencies whose services and decisions affect most people's lives.

*"new blood, new ideas
and new ways forward"*

Of course, that is not the limit of local people's involvement. The new Trustees are looking for many other people to take on a range of responsibilities

ties in five separate working groups dealing with:

- o The running of the Community Centre
- o Membership and Volunteers
- o Developing Partnerships for new Projects and Initiatives
- o Marketing, Publicity and Communication
- o Finance

If you have the interest and commitment to volunteer for any of these working groups the Trust members would love to hear from you. You will be working with other people on the same issue and not shouldering the burden on your own.

If you haven't done this kind of thing before, but wish to help your community, a series of training days are planned to bring you up to speed. 'Community Matters', the leading national organisation, will run them in Exeter. The Trust is also in the process of setting up visits to other Community Associations who run a Centre to swap notes with them.

It will also be good fun!

Exwick Community Centre – Progress so far:

Near the top of Kinnerton Way, on the left as you go up the hill, is a tower crane above a building site. This is the new Exwick Community Centre. At the time of writing, the roof is about to be tiled and the long awaited building is becoming a reality.

The building will consist of a shop, a general grocers which will occupy most of the ground floor. Next to the shop is the entrance to the Community Centre.

The upper floor houses the main Community Centre Hall with a small meeting room and a kitchen.

Next to the Centre will be a Multi Use Games Area for 5 a side football, net-

ball/basketball and other similar activities.

The agreement between Westbury Homes and Exeter City Council [the owners of the building] is for completion on 31 March 2006.

Further progress reports will be available in the next Newsletter – or have a walk up Kinnerton Way and see for yourself.

A plan of the building can be found at www.exeter.gov.uk/index.aspx?articleid=3672

Handy internet tip—type the whole web address including the bit after the “?”

**Exwick Christmas
Puppet Show**

Saturday,
3rd December, 3 p.m

Exwick Heights
(Exwick Middle School)

*Free entry
Voluntary donations
to charity.*

Everyone welcome!
Exwick Community Church



**Free Under 12's Fancy Dress
Halloween Disco**

Centre Exe, Exwick Rd,
Friday October 28th
4pm – 5.30pm

Prizes for the best costumes.
Children with Parents/ guardians only
Contact Tor at Centre Exe

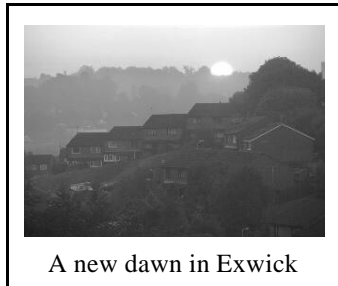


Potted History of Exwick Community Association (ECA) – Pat Cusa

In April 1993, Peter Nicholls, the then Director of Leisure and Tourism at Exeter City Council invited various people and organisations to attend a meeting to discuss the possibility of developing new community facilities on land adjacent to the Norman's superstore. This was allocated by the developer for a community building at the time that the planning approval for the superstore was obtained.

The people attending the meeting became the steering group to push forward the community facilities at Exwick. In February 1994 it was agreed to expand the committee and begin the process of forming the Community Association. It was agreed to hold a public meeting in April 1994 at Exwick

Middle Schools. Peter Butler, Exwick's County Councillor took the chair at this



A new dawn in Exwick

meeting and the idea and plans were put to the residents of the Exwick community. 2000 households were surveyed for this project and 67% declared that they would use the facilities at least once a week.

In September 1994 the community association was born, bank accounts opened and positions agreed on. And in

November the first AGM was held.

Whilst this process was going on, the plans and budgets were being produced through Steve Keable, of Devon County Council Community Education Department. The Exwick Courier was produced and delivered to households in Exwick, keeping them up to date with the

"We sold bricks at £1 each."

latest information. Some of you may remember the Fun days that were held to raise awareness and raise a bit of money. We sold bricks at £1 each. The money from these events is of course still avail-

able and will be handed over to the new committee on its formation.

During the next couple of years the Association had one, followed by another rejection from the Lottery fund for the project which was very difficult considering all the work that had taken place. Our committee also saw the sad deaths of Peter Butler and Kate Bushell during this time and the departure of key figures at Exeter City Council and committee stopped work.

I am of course delighted to see this project resurrected and can only wish it the best of luck for the future. It is the least the residents of Exwick deserve after all these years.

Pat Cusa
Family Services Manager
Buddle Lane Family Centre

Open Meeting—come along, join, vote, get involved...

On the 1st November at 7.30pm the Exwick Community Association is holding an extraordinary general meeting at the Civil Service Club, Exwick. What this means is all members are asked to come along and vote for an updated Constitution and to elect Trustees for Exwick Community Association.

BUT, there are not currently any members as everyone's annual membership has run out. So everyone is welcome as if you come along we will give you free membership of ECA for the rest of the year until April 2006.

You can choose: Come along, join and get involved or just come to listen.

Of course part of the point of getting involved is that you can be part of the group who run the association and can decide what membership might cost; if there will be discounts, or perhaps it will always be free. You can be involved... Any age, 16 to, well there is no upper limit (under 16s too)!

This is a great opportunity. We look forward to seeing you there.

Christmas Bin Collections In Exwick

A regular problem over long bank holidays, when its difficult to remember when to put the bins out, is the unsightly mess of ripped bin liners and streets strewn with rubbish. Do your bit to avoid this problem by cutting out and keeping this handy reminder of collection times for the Christmas holiday period.

Christmas/new year 2005/2006 household collections days	
Collections due	Collection will take place on
Monday 26 th December	Wednesday 28 th December
Tuesday 27 th December	Thursday 29 th December
Wednesday 28 th December	Friday 30 th December
Thursday 29 th December	Saturday 31 st December
Friday 30 th December	Tuesday 3 rd January
Monday 2 nd January	Wednesday 4 th January
Tuesday 3 rd January	Thursday 5 th January
Wednesday 4 th January	Friday 6 th January
Thursday 5 th January	Saturday 7 th January
Friday 6 th January	Monday 9 th January
Monday 9 th January	Tuesday 10 th January
Tuesday 10 th January	Wednesday 11 th January
Wednesday 11 th January	Thursday 12 th January
Thursday 12 th January	Friday 13 th January
Friday 13 th January	Saturday 14 th January