

Exwick Community Centre Part 2

To build your own Exwick Community Centre you will first need both part 1 and 2.

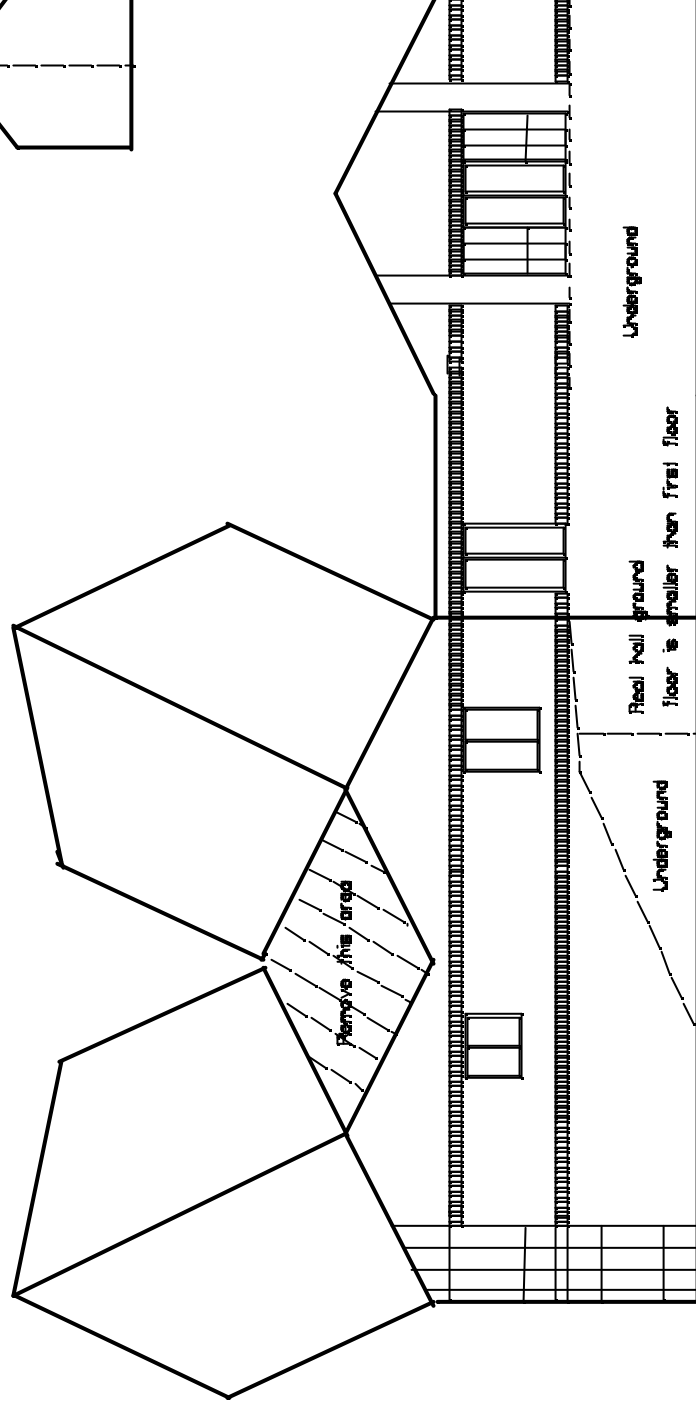
Cut out the two parts of the hall along the out line. Next carefully fold along the heavy lines.

You may want to run a blunt pencil along

these lines first to help them bend in the right place.

Use sticky tape on the inside to construct your centre.

Drawn by T.Sharp
Based on drawings
provided by Westward Homes
October 2004, updated May 2005



Plan from above

